

MT301 User Manual

Statement

This handbook is the manual of MT301. Without the written permission from the manufacturer, any company or individual shall not copy or backup it in any form (electronic, mechanical, photocopying, recording or otherwise). This manual is only operating instructions for MT301. If any result caused by using it on other equipment, the company does not assume any responsibility for it.

If not quality problems of MT301: such as equipment failure caused by user abuse or misuse, unauthorized disassembly, repair equipment yourself, not operate or maintain by the instructions, lose it, the repair will not be free. Other product names mentioned in this manual are in order to describe how to use MT301, and their owners are still the original company.

This device complies with part 15 of the FCC Rules. Operation is subject to the following two conditions(1) The device may not cause harmful interference, and(2) this device must accept any interference received, including interference that may cause undesired operation.

Content

Chapter 1 : Summary.....	1
1.1 Features.....	1
1.1.1 Advantages.....	1
1.1.2 Durability.....	1
1.2 Introduction of the device.....	2
1.2.1 The introduction of the main unit.....	2
1.2.2 Introduction of Accessories.....	3
1.3 Hardware technical specification.....	4
1.4 Functions Setting.....	4
1.4.1 Functions Selection.....	5
1.4.1.1 Battery Test.....	5
1.4.2 System Setting.....	6
1.4.2.1.Language.....	6
1.4.2.2.Font.....	7
1.4.2.3 Metric/Inch.....	7
1.4.2.4.Data Logging.....	8
1.4.3 System Information.....	8
1.4.4 Device Self-test.....	9
1.4.4.1 Keyboard Test.....	9
Chapter 2: How to update software for OBDPROG MT301.....	10
2.1 Update Tool software Installation.....	10
2.2 Register	12
2.3 Software Updating.....	13

Chapter1: Summary

1.1. Features

1.1.1. Advantages

- Providing multi-language environment so it can be used in different countries and regions.
- The main unit system uses ARM high-speed chip to keep it running fast, stable, and anti-jamming.
- Modern design and high-definition true color screen realize the integration of automotive industry and electronic information technologies and make auto diagnosis and key programming easier, practical and economical.

1.1.2. Durability

- Integrity structure design makes it crack resistance, shock resistance and durable .
- Industrial design ensures the tool work stably under tough environment, as high and low temperatures.

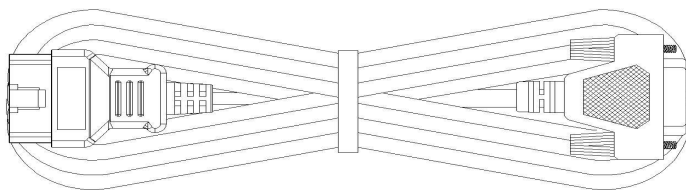
1.2 Introduction of the device

12.1 The introduction of the main unit

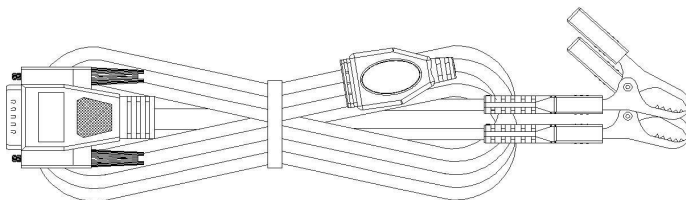


Number	Name	Instruction
①	Display Screen	Show information
②	Charging Interface	Connect with the charger
③	TF card slot	TF card storage
④	USB Interface	Connect with USB cable
⑤	Up	Up
⑥	F2	Keyboard input option key
⑦	F1	Keyboard input option key
⑧	Right	To right
⑨	Left	To left
⑩	Down	Down
⑪	ESC	Exit or give up
⑫	OK	OK
⑬	Testing cable port	Connect to the main test cable

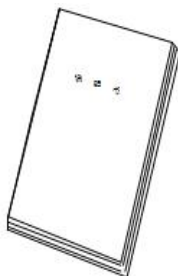
1.2.2 Introduction of accessories



OBD 16 pin testing lead (Connect to car diagnostic socket)



Double clamp battery testing lead (Connect to car battery. (Red--positive/Black--negative)



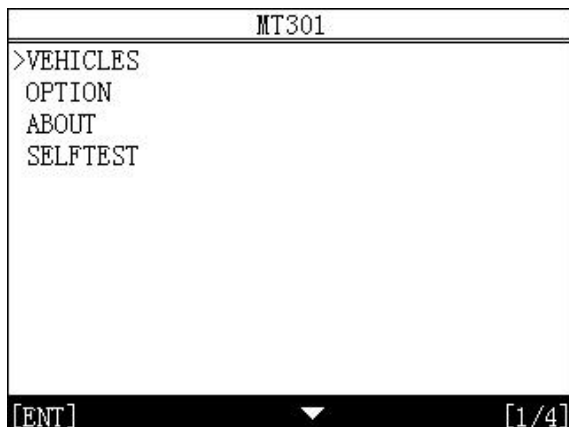
User Manual

1.3 Hardware technical specification

- Dimension: 202mm(L)*106mm(W)*31.6mm(H)
- CPU: ARM CORTEX M3
- Power Supply:DC12V
- Operation Power:DC12V
- Operation Temperature: -10~60℃
- Display Screen: 320×240 TFT

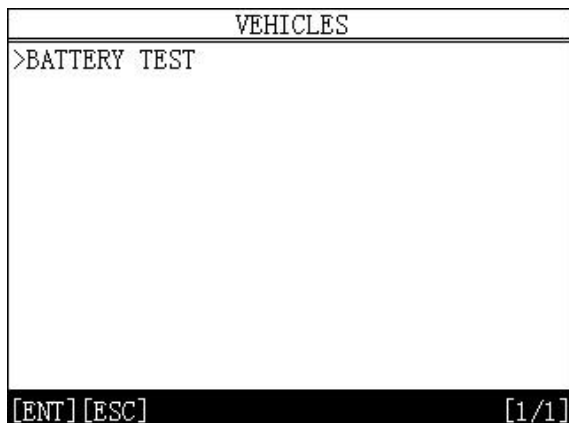
1.4 Functions Setting

Power on, and then press ENTER on the screen, then go to the function setting, setting information as shown below:



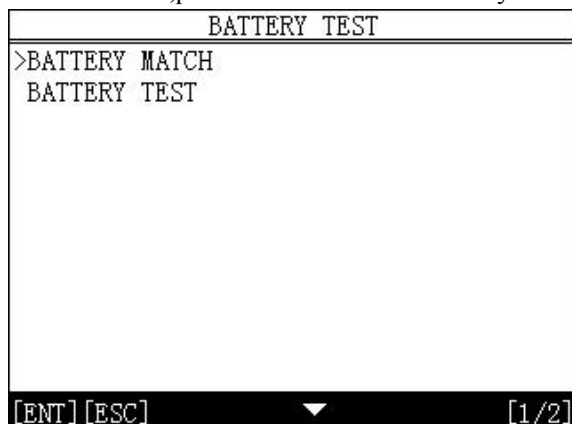
1.4.1 Vehicles

Press OK to confirm. The diagram below.



1.4.1.1 Battery Test

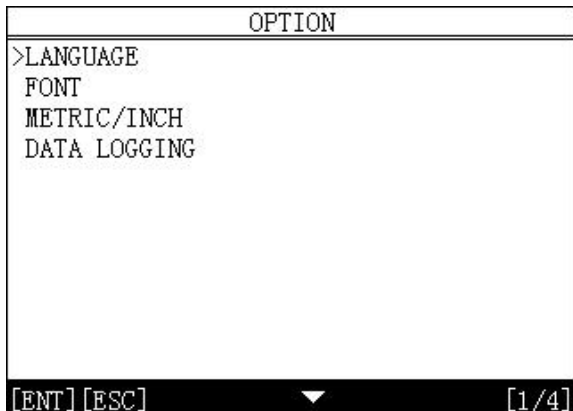
Press OK,press OK to confirm the entry.The diagram below:



Note: the number and function of different product configuration software will be different ,Please contact the dealer for confirmation of the number of software.

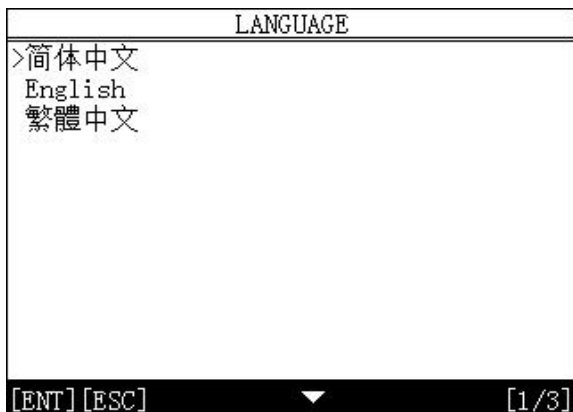
1.4.2 System Setting

Select system setting, you can set the language,font, metric/English system, data record, as shown below.



1.4.2.1 Language selection

This device supports simplified Chinese, traditional Chinese, English, Russia, Greek, Spanish, Italian. In the language directory, select required language by Up and Down and press ENTER to confirm it.



1.4.2.2 Font

Choose large or small fonts

FONT	
>LARGE	
SMALL	
[ENT] [ESC]	[1/2]

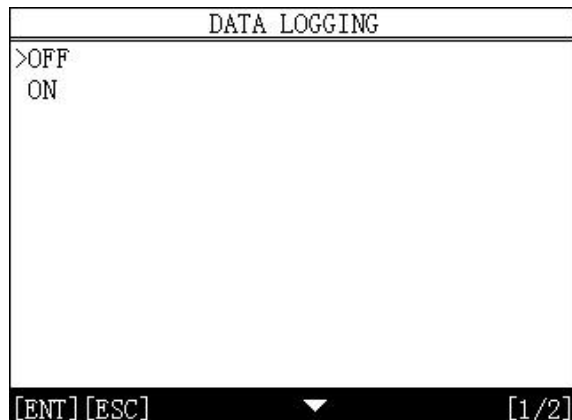
1.4.2.3 Metric/Inch

Optional metric or English system

METRIC/INCH	
>METRIC	
INCH	
[ENT] [ESC]	[1/2]

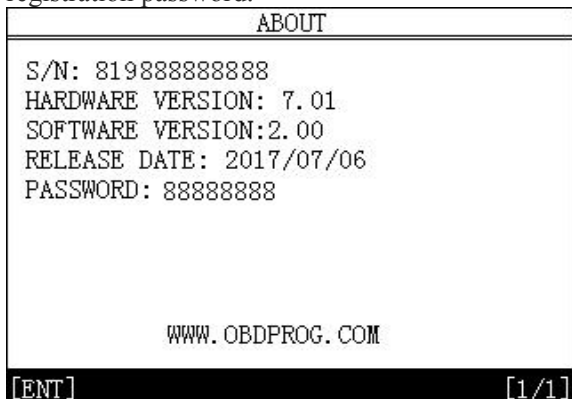
1.4.2.4 Data Logging

Optional to close or open



1.4.3 System Information

The system information includes the product serial number, the hardware version, the software version, the hair Cloth date, registration password.



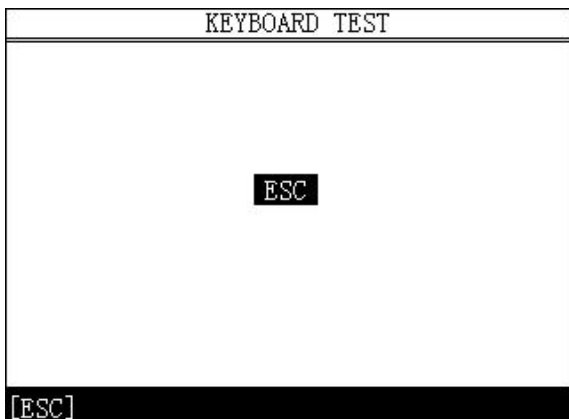
1.4.4 Device Self-test

Liquid crystal self-check or keyboard self-check can be selected.



1.4.4.1 Keyboard self-inspection

The machine self-check includes LCD display, keyboard test, such as the lack of the display screen, keyboard malfunction, please send MT301 to the manufacturer for maintenance



Chapter 2: How to update software for MT301

2.1 Update Tool software installation

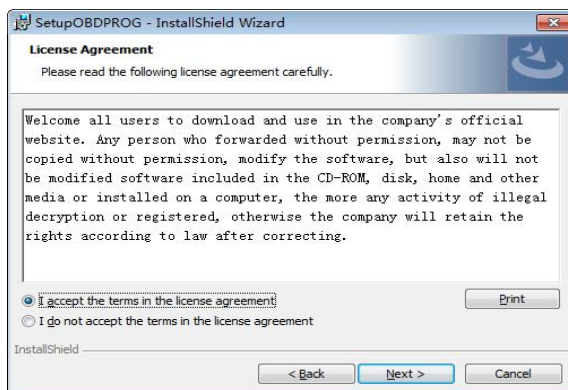
Login our website: <http://www.obdprog.com> and click “Click a key to upgrade”.

Download the update tool and diagnostic software, double click , then go to the next step:

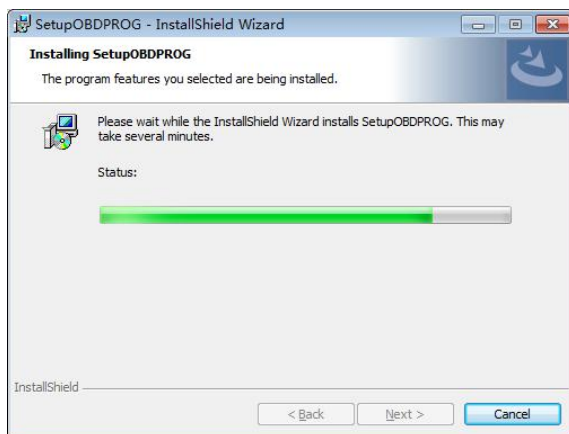
Step1:Click “Next”



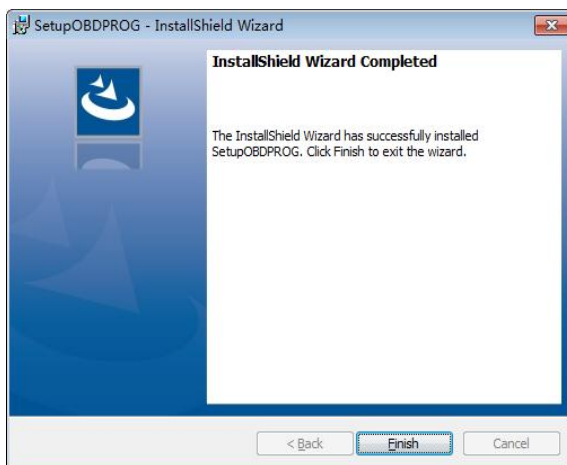
Step 2: Click “Next



Step3: Click “Next”

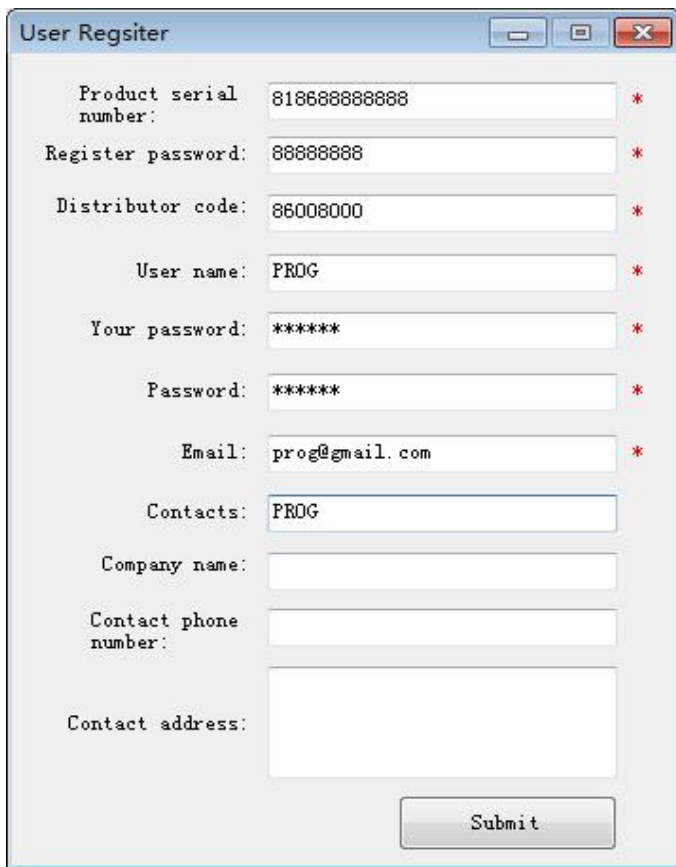


Step 4: Click “Finish”



2.2 Register

Click “Sign up” to fill in user information. Username can be Chinese characters or the combination of alphabet and numbers. Serial number and register password can be referred to System information in the device.(Figure 1.4.3)



Product serial number:	<input type="text" value="818688888888"/>	*
Register password:	<input type="text" value="88888888"/>	*
Distributor code:	<input type="text" value="86008000"/>	*
User name:	<input type="text" value="PROG"/>	*
Your password:	<input type="text" value="*****"/>	*
Password:	<input type="text" value="*****"/>	*
Email:	<input type="text" value="prog@gmail.com"/>	*
Contacts:	<input type="text" value="PROG"/>	
Company name:	<input type="text"/>	
Contact phone number:	<input type="text"/>	
Contact address:	<input type="text"/>	

2.3 Software Updating

Operation steps as following:

Step 1: Remove the TF card from your device.

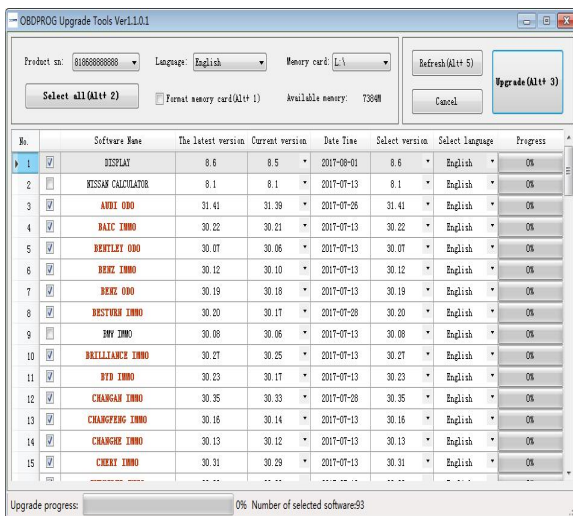
Insert your TF card into computer.

Step 2: Open update tool and login

Step 3: Click the source menu, choose the program you want to update, click it and confirm.

Step 4: Click and select all the software then click “update”

Step 5: Wait for several minutes then the updating finished



Note:For new update software and questions during updating, please contact your distributor.